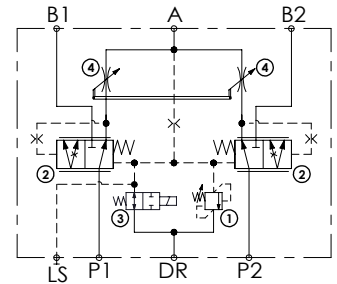
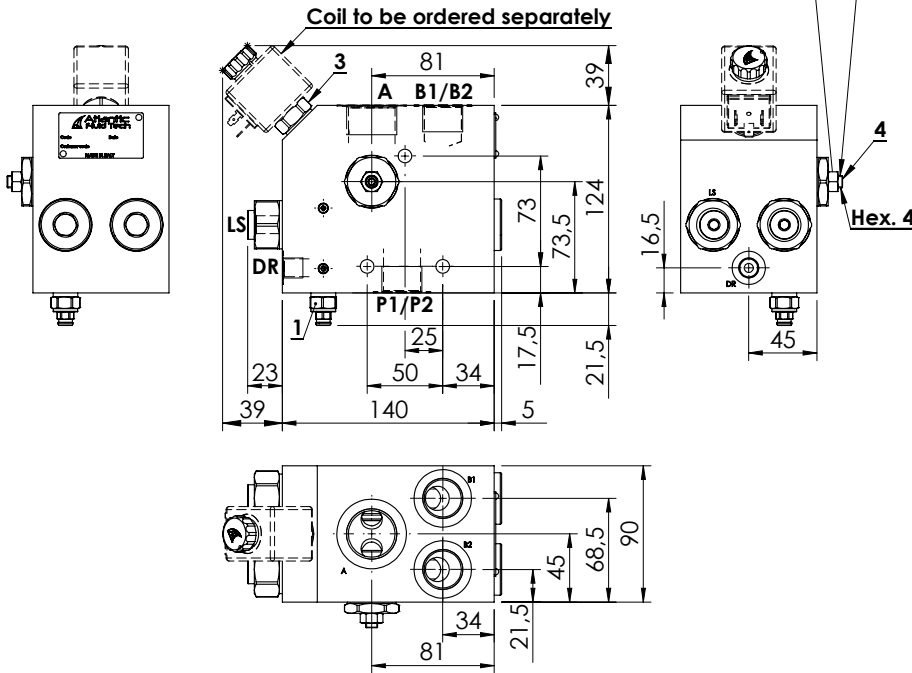
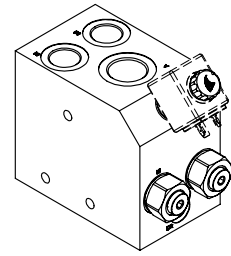
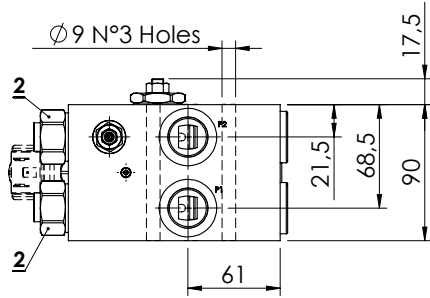


FLOW REGULATOR

MFTT-200-MHAR

**PRESSURE COMPENSATED PRIORITY
TWO PUMPS SYSTEM
FLOW REGULATOR FOR
AUXILIARY CIRCUITS**

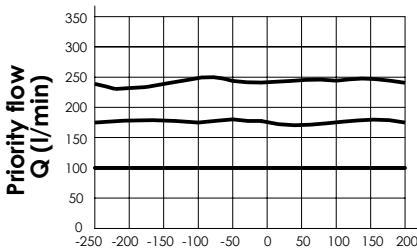


SPECIFICATIONS

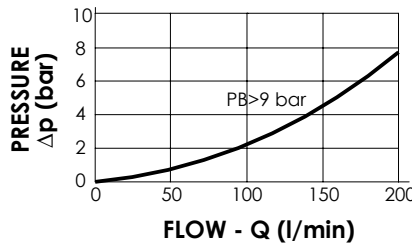
Max. operating pressure:	350 bar
Rated flow:	2 x 200 l/min
Regulated Flow:	3 - 250 l/min
Manifold:	Zinc plated steel
Weight:	10,9 kg
Coil:	M7

NOTES

- Turn screw "R" anti-clockwise to increase regulated flow.
- Drain flow when de-energized 4 l/min.
- Max back pressure admitted on "DR" line 1,5 bar.
- For correct operation 8-9 bar must be present in port A. For open centre or low pressure systems a 9 bar check valve should be fitted in port A.
- Spool switching can be influenced by flexing or stressing the valve body. It is recommended to fit spacers on the mounting bolts between the valve and the mounting surface.
- See chapter four for suitable check valves.



PB > PA ← PA = PB → PA > PB (bar)



ORDERING CODES

Quick code	Description	Main ports size	Setting range (bar)	Standard setting (bar)	Adjustment (bar/turn)
MF000064	MFTT-200-MHAR-14-G34-N210	P1-P2-B1-B2: G3/4" A: G1"; T: G1/4"	100-200	200	75
MF000065	MFTT-200-MHAR-14-G34-N350	P1-P2-B1-B2: G3/4" A: G1"; T: G1/4"	150-350	350	165